

BAKU MARIONETTE THEATRE'S RIDER FOR ITS 'LEYLI & MAJNUN' MARIONETTE SHOW

The following lists are the basic requirements for the THEATRE to perform, but depending on the details of the Performance Voyage, it is not necessarily a statement of the full backline.

Basic contacts available at <http://marionet.az/en/6-contact>

BASIC DETAILS OF THE SHOW

- **DURATION:**
45 minutes
- **AUDIENCE CAPACITY:**
50-60 seats
- **SOUND:**
Oriental mugham opera; totally soundtrack performing; professional mugham singers and musicians recorded.
- **VIEW:**
Puppeteers and puppets both are in the view; black cabinet show on the stage clothed in black backdrop kit (set of 11 black curtains 320 cm height); the stage's main curtain opens in the centre.
- **TECHNICAL:**
Computerized light/soundtrack control (a single file); precisely adjusted location of each of the light devices; minimal size of the stage (including functional backstage area) is 10x6.5 metres (please find the map of the stage attached).

THE CREW

- 12 persons

LUGGAGE

- **Minimal** luggage that theatre will bring is the stage equipment (950 kg) consisting of the stage platform, puppets, scenery sets, black backdrop kit (set of 11 black curtains 320 cm height), costumes, stage machinery.
- **When the venue is not equipped** with necessary lighting, hanging, audio etc. systems, the theatre will bring its own items (please see below).

TO BE PROVIDED BY ORGANIZERS

LIGHTS

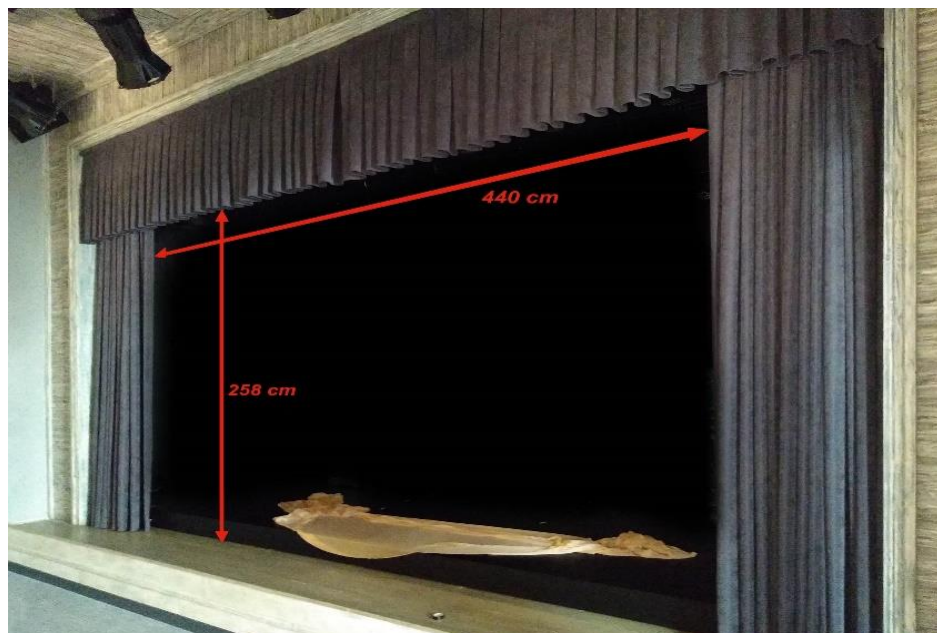
- *LED WASH*
ROBIN 600LEDWASH **4 pcs**
- *LED PAR*
PROEL SLIM PAR 12 (or any Projector Slimpar 12X12W ledRGBWAU/FCIRC
Luminous flux: 1210 lux @5mt (25°)) **10 pcs**
ROBE LEDForce 18 RGBW (or any 8 x 3 Watt Tri Color RGB LEDs and 18 x5 Watt
Quad Color RGBW LEDs Beam Angle 10° -25 °) **10 pcs**
- *PROFILE Spot LED*
PROEL SG SAGOLEDWW (or any profile LED spot 1x120W Led Warm White
3200K Luminous flux: 2950 lux @5mt (beam angle 19°)) **8 pcs**
- *PAR*
PAR 64 (1000 W) **1 pcs**
- *LIGHT REMOTE*
DMX512 RING TYPE wired Connection

SOUND

- Stereo Sound System w. 2 free Balance (or Unbalance) inputs

STAGE TACKLE & ACCESSORIES

- Hooks at the backstage for hanging puppets
- Lags above the stage for hanging black backdrop kit on the height of 320 cm
- 4 chairs at the backstage
- 2 dressing rooms: girls and boys separated.
- The main curtain opens from the stage centre; colour – dark grey (preferred) or black.



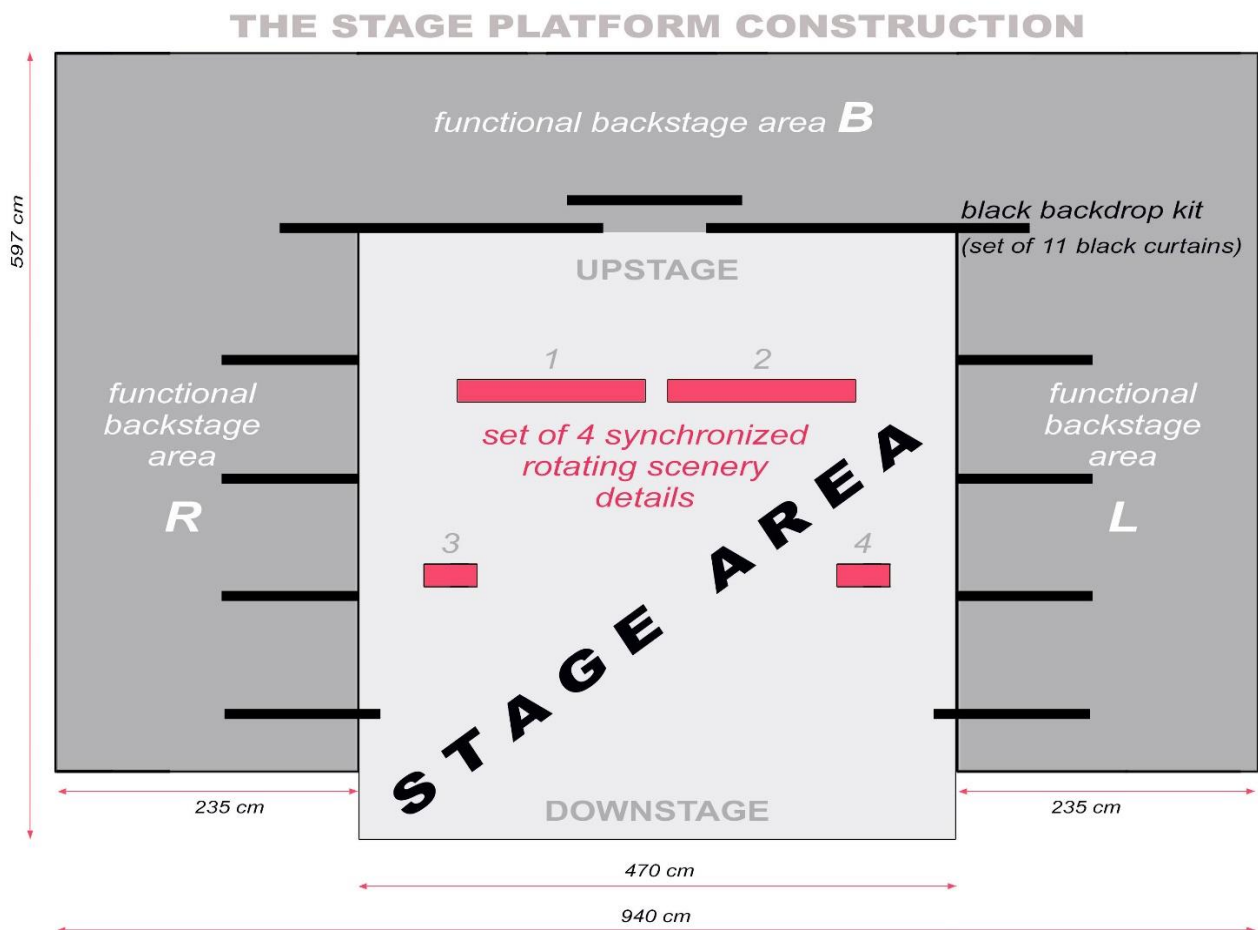
SET UP REQUIREMENTS

A. Mounting: 1 day

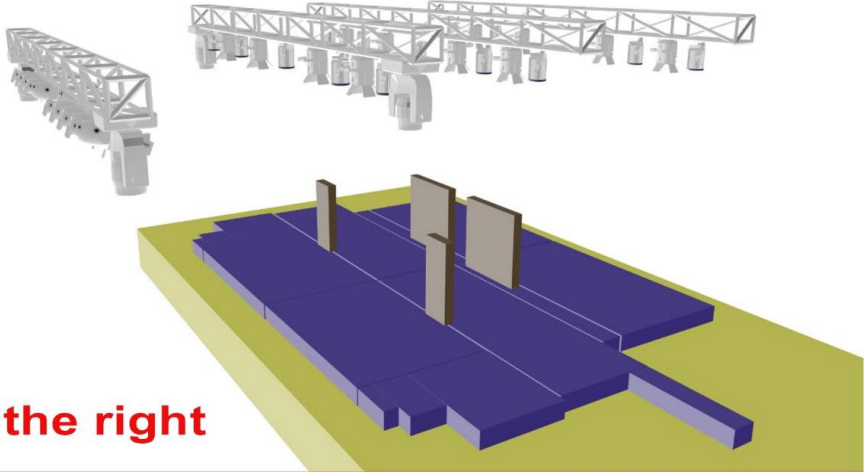
- 2 workers needed
- Engineer present at all times
- 2x3 metre clear space in hall, must be within 2 metres of main mixer, power socket 220 V and dmx output line
- 1 Table with backing to be positioned within 5 feet of the decks for PC / belongings etc, with adequate adjustable lighting and fan

B. Testing/Rehearsal: 0,5 day (then the same day evening show possible)

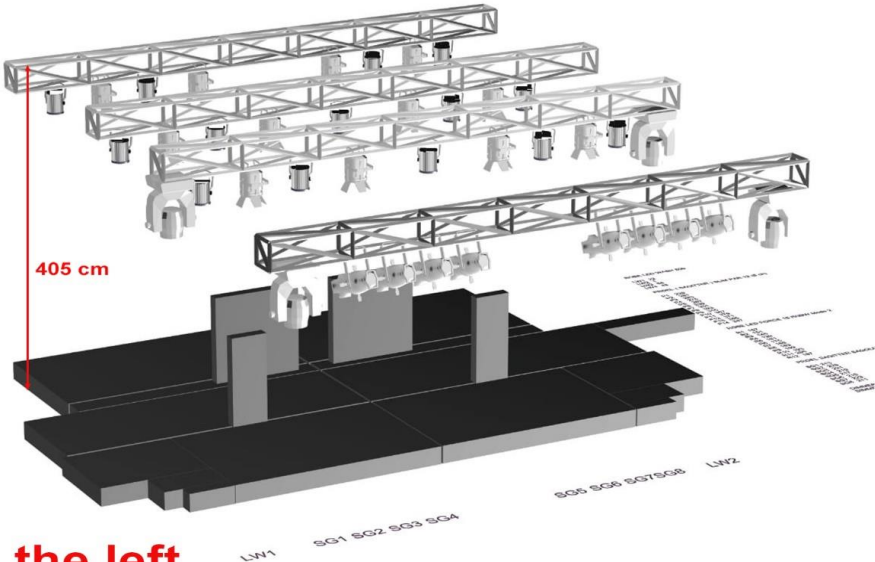
C. Dismounting: 0,5 day



LIGHTS



View from the right



View from the left



Frontal view